

SAN-C corner arch fender

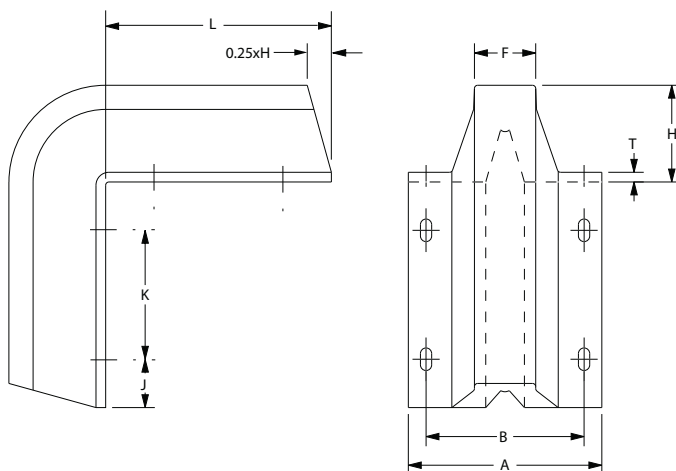
PsG Corner Arch Fenders are an improved version of solid Arch and "W" type fenders.

PsG Corner Arch Fenders are fully reinforced with a steel plate, which spreads berthing loads on a wider area thus reducing pressure on jetty walls.

The strong & resilient mechanisms ensure a long life to the structure and they protect the vessels and crafts from damaging themselves.

Key performance characteristics include:

- Higher energy absorption to reaction force ratio (E/R)
- Higher load carrying capacity.
- Higher shear resistance



Dimensions

Type	H	L	A	B	F	K	J	T	Anchor
SAN-C 150x500	150	500	300	240	98	200	75	22,5	M22x8
SAN-C 200x750	200	750	400	320	130	350	100	35	M24x8
SAN-C 250x750	250	750	500	410	164	350	100	37,5	M27x8
SAN-C 250x1000	250	1000	500	410	164	550	150	37,5	M27x8
SAN-C 300x825	300	825	600	490	190	360	140	44	M30x8

Units: mm