

LE Fenders

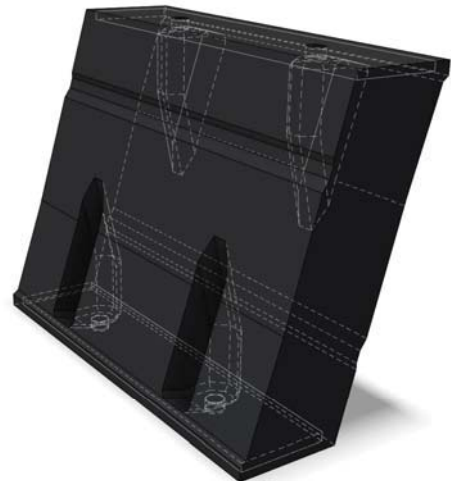
LE series fenders are a combination of two I section vertical legs and fabricated frontal frames equipped with low friction UHMW HDPE pads to provide an efficient alternative to an arch fender.

Element type fender provides a compact solution for the mounting of fenders in areas with limited space. These fenders are high performance units which are extremely compact and versatile.

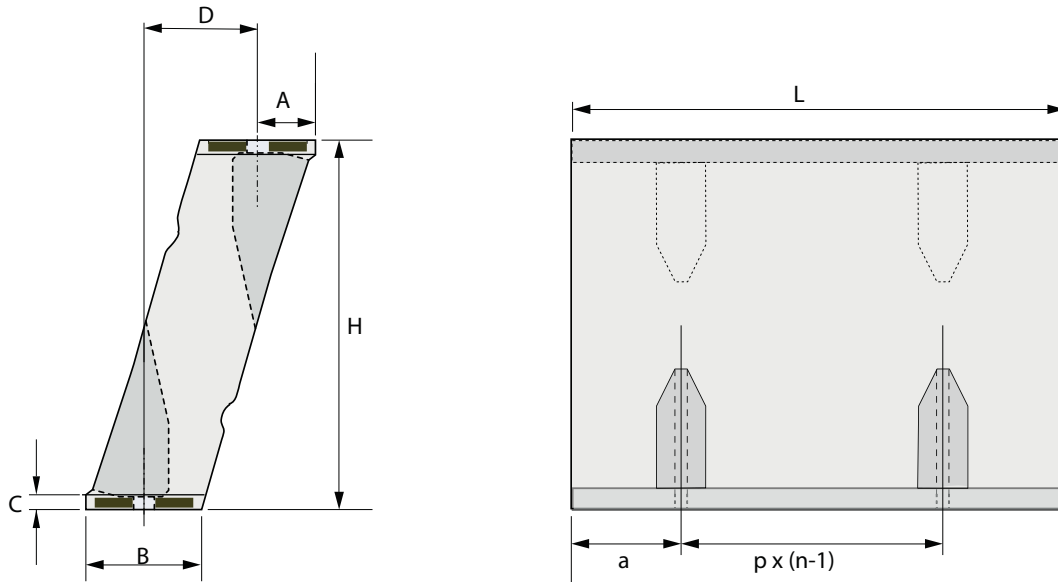
These fenders are the best option for open sea berthing structures, dolphins and jetties, where extreme wave and current conditions are prevailing.

Key performance characteristics include:

- ▶ Good energy absorption and low reaction force
- ▶ With shockproof plates at the front, it may reduce surface pressure
- ▶ Pro-longed life and easy replacement



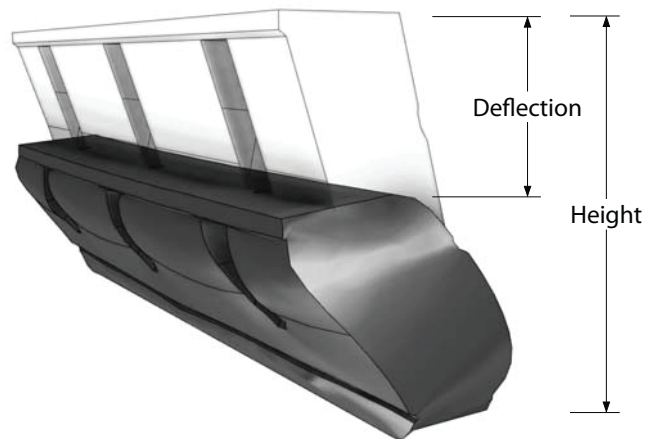
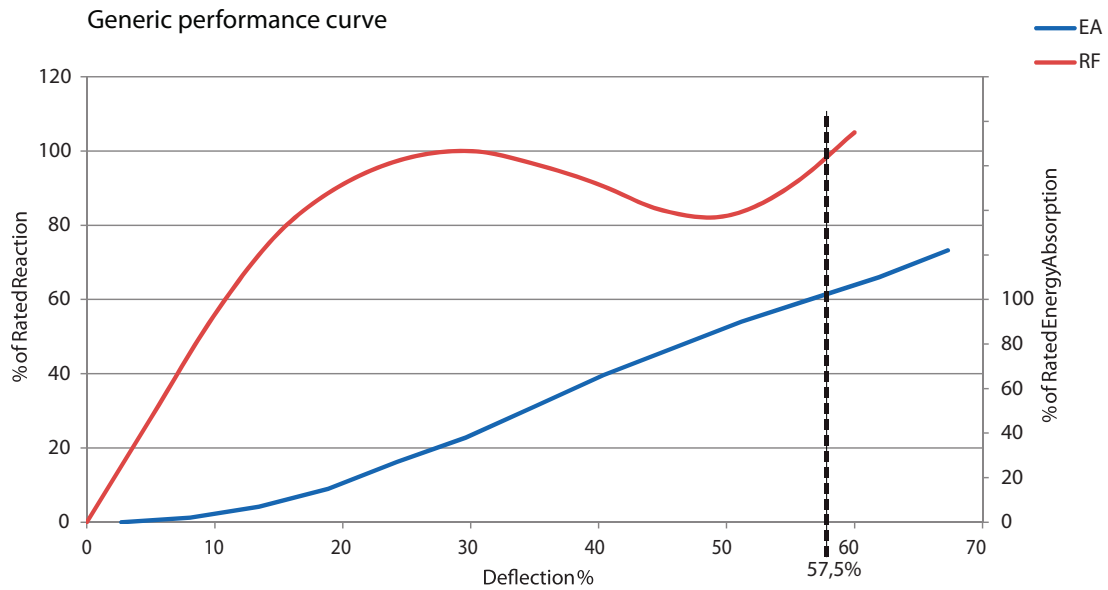
LE Fenders



Type	H	A	B	C	D	L	a	p	n	M	Weight/m	Note
LE-300	300	47	94	15	94	2000	250	500	4	M20	45	Products with other dimensions can be manufactured upon request.
LE-400	400	63	125	17	124	2000	250	500	4	M24	66	
LE-500	500	87	158	20	142	2000	250	500	4	M30	111	
LE-550	550	87	172	20	170	2000	250	500	4	M30	132	
LE-600	600	87	188	20	199	2000	250	500	4	M30	153	
LE-750	750	118	235	26	230	2000	250	500	4	M36	239	
LE-800	800	129	250	26	240	2000	250	500	4	M36	268	
LE-1000	1000	162	322	31	310	2000	250	500	4	M42	432	
LE-1250	1250	202	401	36	388	2000	250	500	4	M48	639	
LE-1450	1450	228	454	41	454	2000	250	500	4	M48	873	
LE-1600	1600	257	500	50	480	2000	250	500	4	M56	1114	

Units stated in mm, kg

LE Fenders



Specification	Compound A		Compound B		Tolerance
	Energy absorption (kNm)	Reaction force (kN)	Energy absorption (kNm)	Reaction force (kN)	
Hight X Length					
LE 300 X 1000	22	161	15	110	±10%
LE 400 X 1000	39	214	27	150	
LE 500 X 1000	61	267	43	187	
LE 550 X 1000	75	294	52	206	
LE 600 X 1000	89	320	62	224	
LE 750 X 1000	137	402	96	282	
LE 800 X 1000	157	428	110	299	
LE 1000 X 1000	245	534	172	374	
LE 1250 X 1000	383	667	268	467	
LE 1450 X 1000	516	775	361	543	
LE 1600 X 1000	628	855	440	599	

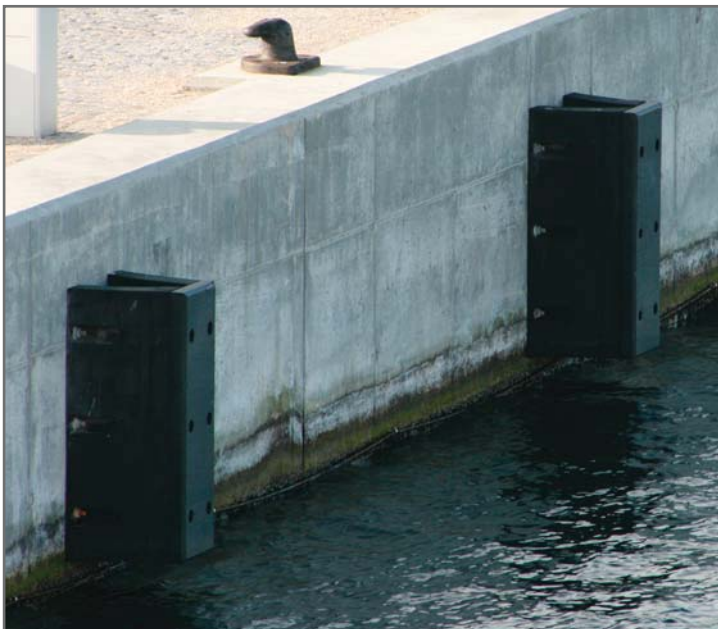
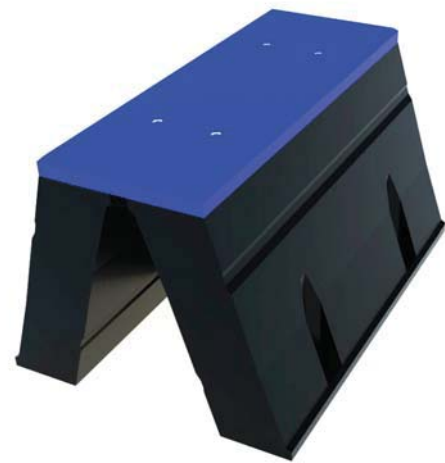
The above values are per metre element and by 57,5 % deflection.

LE V Fenders

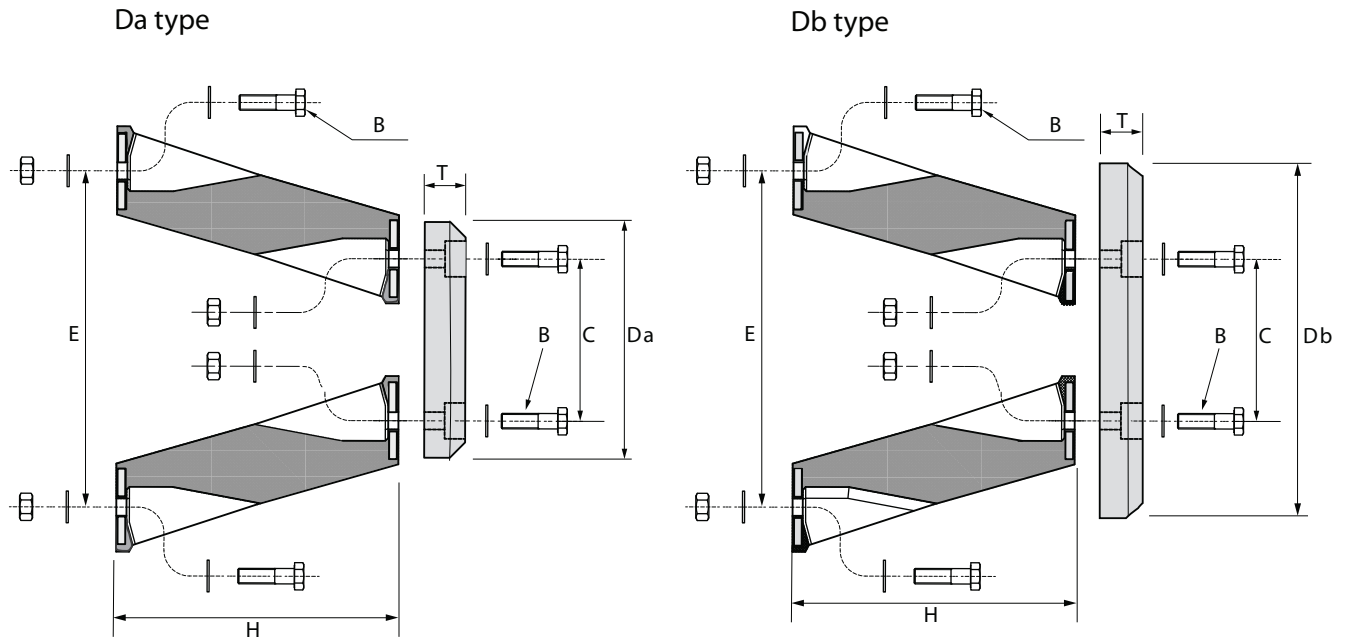
Psg LE V fenders can be used as a simple, and maintenance-free system with high performance and a robust design at low costs.

All LE V fenders use one or several pairs of LE-elements and a front shield. The shield is a structural component of the fender, directly bolted to the LE-element.

The UHMW-PE face is also very gentle on ships. It will adjust to the contours of the hull, will not ark. UHMW-PE has very low friction co-efficient which reduces stresses in the LE V fenders and fixings.



LE V Fenders



Type	H	B	C	Da	Db	E	T	Note
LE-V 300	300	M20	172	270	410	360	70	Products with other dimensions can be manufactured upon request.
LE-V 400	400	M24	232	360	500	480	80	
LE-V 500	500	M30	316	460	660	600	90	
LE-V 550	550	M30	320	500	750	660	90	
LE-V 600	600	M30	322	530	800	720	90	
LE-V 750	750	M36	440	680	1010	900	100	
LE-V 800	800	M36	480	730	1170	960	100	
LE-V 1000	1000	M42	580	900	1330	1200	120	
LE-V 1250	1250	M48	724	1140	1660	1500	120	

Units stated in mm

Specification Height x Length	Compound A		Compound B		Tolerance
	Energy absorption (kNm)	Reaction force (kN)	Energy absorption (kNm)	Reaction force (kN)	
LE V 300 X 1000	44	322	30	220	±10%
LE V 400 X 1000	78	428	54	300	
LE V 500 X 1000	122	534	86	374	
LE V 550 X 1000	150	588	104	412	
LE V 600 X 1000	178	640	124	448	
LE V 750 X 1000	274	804	192	564	
LE V 800 X 1000	314	856	220	598	
LE V 1000 X 1000	490	1068	344	748	
LE V 1250 X 1000	766	1334	536	934	

The above values are per metre fender system and by 57,5 % deflection.