

## PsG Cone Fenders

**PsG series Cone Fenders are an improved version of Cell Fenders and recommended for all type of applications especially at sites with high tidal variations.**

Cone Fenders allow angular berthing without any loss in their energy absorption.

The PsG Cone Fender has a design deflection of 72,5% of its height and provides great flexibility in it's application to operators.

Cone Fenders are typically utilized with a complete fender panel system, but can also be used within a pile supported system.

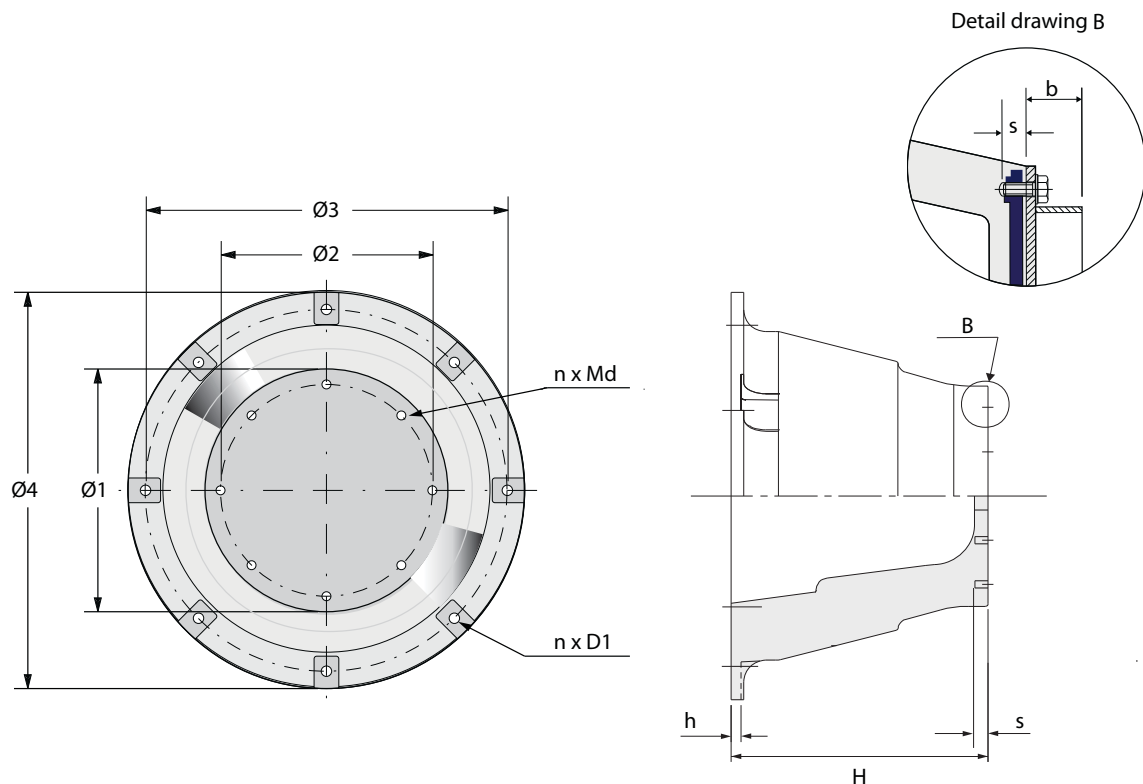
Key performance characteristics include:

- ▶ Higher energy absorption to reaction force ratio (ER)
- ▶ Higher load carrying capacity (Panels & Accessories)
- ▶ Higher shear resistance



# PsG Cone Fenders

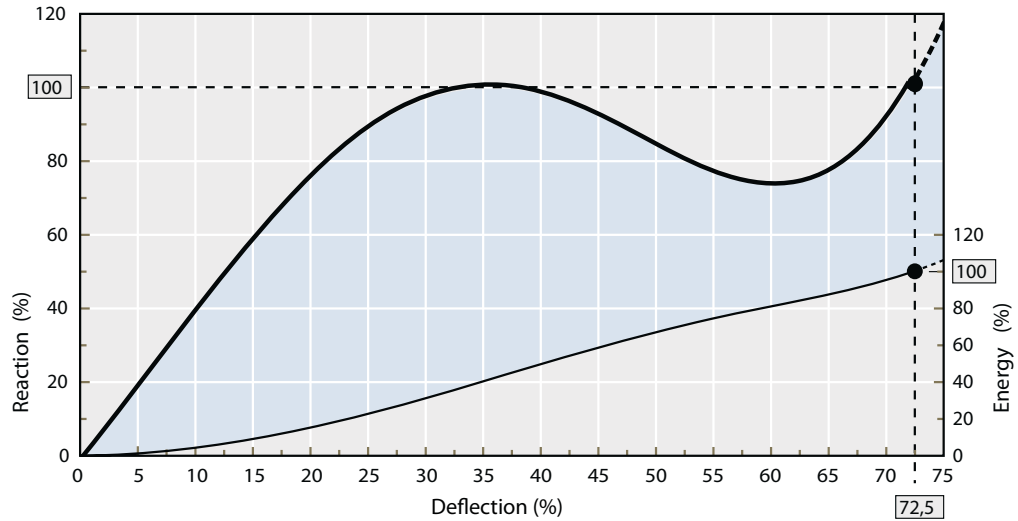
Specification	Main dimensions stated in mm and kg												
Type	H	h	Ø 1	Ø 2	Ø 3	Ø 4	n	D.1	Md	a	b	s	weight
PSG-C 500	500	25	425	325	675	750	4	30	M24	4	75~95	36	140
PSG-C 600	600	27	510	390	810	900	6	30	M24	5	90~110	40	230
PSG-C 700	700	32	595	455	945	1050	6	38	M30	6	105~125	40	390
PSG-C 800	800	36	680	520	1080	1200	6	44	M36	7	120~140	52	540
PSG-C 900	900	41	765	585	1215	1350	6	44	M36	8	135~155	55	755
PSG-C 1000	1000	45	850	650	1350	1500	6	56	M42	8	150~170	65	1020
PSG-C 1100	1100	50	935	715	1485	1650	6	50	M42	8	165~185	65	1505
PSG-C 1150	1150	52	998	750	1550	1725	6	56	M42	10	170~195	70	1600
PSG-C 1200	1200	54	1020	780	1620	1800	8	50	M42	10	180~210	75	1960
PSG-C 1300	1300	59	1105	845	1755	1950	8	60	M48	11	195~225	75	2400
PSG-C 1400	1400	66	1190	930	1890	2100	8	60	M48	12	210~235	70~80	3060
PSG-C 1600	1600	72	1360	1060	2160	2400	8	70	M48	14	280~270	70~80	4600
PSG-C 1800	1800	78	1530	1190	2430	2700	10	76	M56	16	270~290	75~90	6600



PsG Cone Fenders

# PsG Cone Fenders

Generic performance curve cone fender



Rubber grade	Compound A				Compound B				Compound C				Compound D			
	70%		72,50%		70%		72,50%		70%		72,50%		70%		72,50%	
Performance	E	R	E	R	E	R	E	R	E	R	E	R	E	R	E	R
CONE 500H	79	335	90	380	63	268	70	311	47	200	50	232	37	165	41	193
CONE 600H	157	480	161	542	127	382	129	429	94	283	104	319	75	225	85	258
CONE 700H	235	652	243	691	181	522	192	568	150	384	154	426	120	308	124	341
CONE 800H	368	862	380	930	294	706	316	833	224	502	252	576	179	402	208	428
CONE 900H	494	1078	517	1189	399	862	431	957	306	635	334	703	255	508	270	558
CONE 1000H	669	1339	735	1507	541	1078	588	1213	437	784	478	882	350	628	380	698
CONE 1100H	830	1430	865	1570	650	1146	681	1259	495	927	527	1019	408	800	432	833
CONE 1150H	1029	1764	1103	1985	882	1392	938	1593	666	1038	717	1152	532	830	588	919
CONE 1200H	1103	1746	1149	1920	882	1396	919	1536	705	1106	735	1229	560	890	583	979
CONE 1300H	1585	2125	1640	2312	1310	1705	1360	1900	1043	1320	1077	1537	750	1125	800	1200
CONE 1400H	1686	2255	1756	2506	1349	1804	1405	2005	1079	1443	1124	1604	860	1150	896	1278
CONE 1600H	2419	3024	2520	3150	1935	2268	2016	2520	1548	1814	1613	2016	1234	1418	1285	1575
CONE 1800H	3538	3750	3686	4166	2830	3000	2948	3333	2264	2401	2359	2667	1804	1912	1880	2125

Note: R = Reaction Force E= Energy Absorption Performance Tolerance ±10%  
 Rated compression deflection 70 % and maximum compression deflection 72,5 %.  
 Fenders in different energy absorption and reaction force are available upon request.



PsG Cone Fenders